

Ornamental Trees



16-30

Harpephyllum caffrum





sickle



Leaflets of the compound leaves have a sickle shape



Pattern of compound leaves with sickle shaped leaflets are quite noticeable when viewed as a silhouette against the sky.



Harpephyllum caffrum Bark



Bark can sometimes be almost iridescent (shiny)



Flowers



Fleshy fruit dries to reveal seeds beneath



Fruit emerging from branches



Reddish new foliage

Harpephyllum caffrum – South African wild plum

- Erect or spreading tree from South Africa to 40 to 50' Tall and as wide
- Dioecious tree (sold as male or female)
- Pinnately compound leaves with leaflets 1-2" long and sickle shaped.
- Flowers insignificant and creamy white colored.
- Fruit an edible drupe consumed mostly by birds with a relatively large seed inside.
- Female trees can be messy with a long fruit drop (keep away from patios)

Pistacia chinensis









Top of leaf



Underside of leaf







Tree in OCC Horticulture Department showing December fall color

Pistacia chinensis – Chinese pistache

- From China growing 30 to 60 feet Tall with equal spread
- Foot long leaves with 10 to 12 narrow pointed leaflets.
- Fruit clusters of red berries stay on the tree providing interest after the beautiful fall color has dropped
- Handles many types of soil and growing conditions. An under utilized tree for our area
- Crush leaves to smell radish

Schinus molle



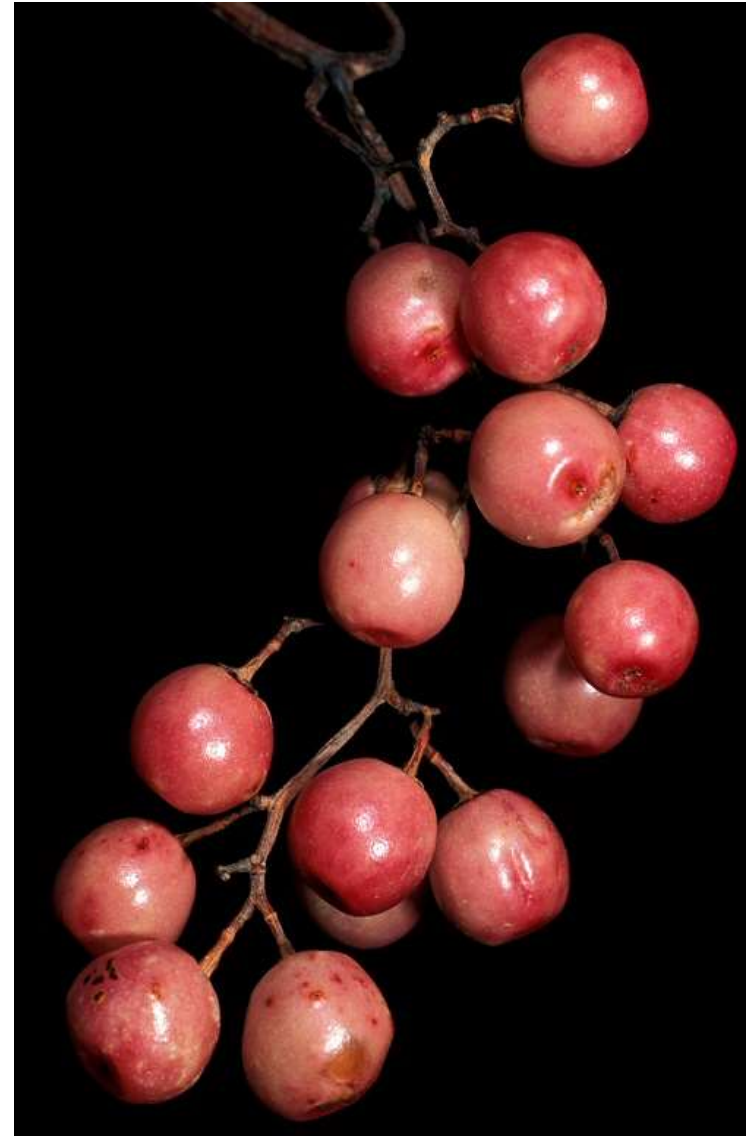




Known for a weeping characteristic even though the branches quite are upright



Each compound leaf has 20 to 60 leaflets



Light Rosy-Red berry actually sometimes used in peppercorn mixes



60" Box Schinus molle





Flowers
can come
and go
unnoticed





Rose-pink “peppercorns”



Trunks often develop character “nobby bumps” as the tree ages



Leaf against typical rough bark





Street scene at the end of Acacia looking East / Corona Del Mar

Schinus molle – California pepper tree

- Native to the Peruvian Andes. Fast grower 25 to 40 feet Tall and wide
- Leaves pinnately compound with many small narrow leaflets.
- Flowers delicate clusters of creamy white flowers can go un noticed
- Flowers yield clusters of rosey pink peppercorn like fruit.
- Trunks can ger bumpy and gnarly with age
- Branches can be brittle in strong winds

Schinus terebinthefolius





Schinus terebinthifolius Bark



OCC's Brazilian Pepper trees



Raymond Ave., Costa Mesa



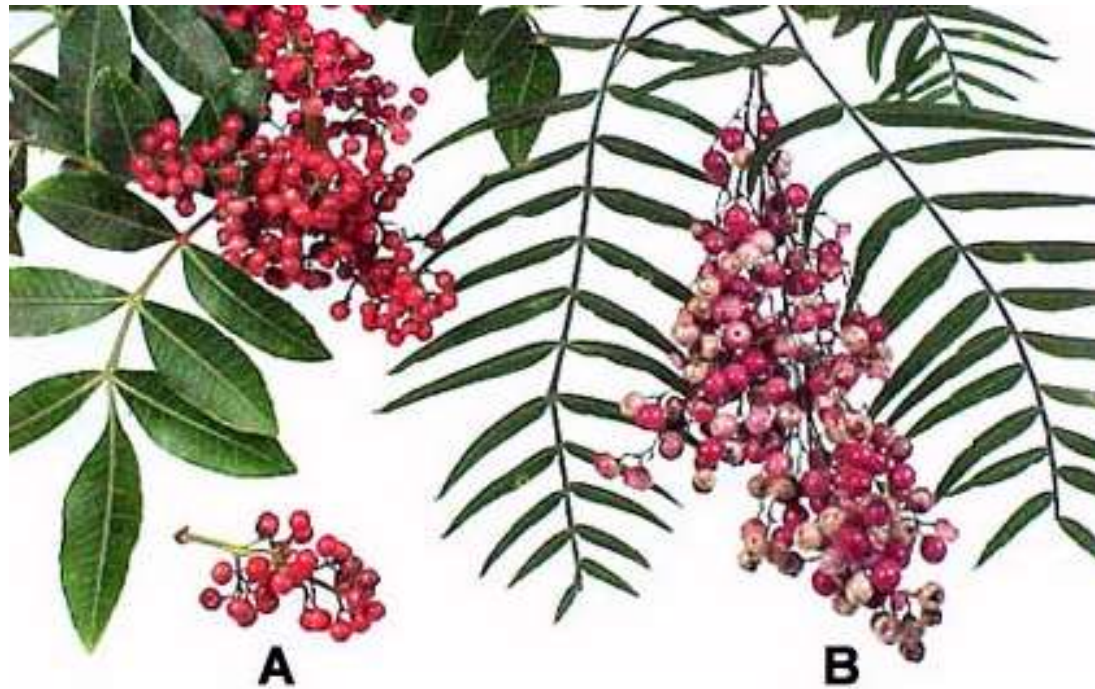
22nd street, Costa Mesa very low sprawling Brazilian pepper





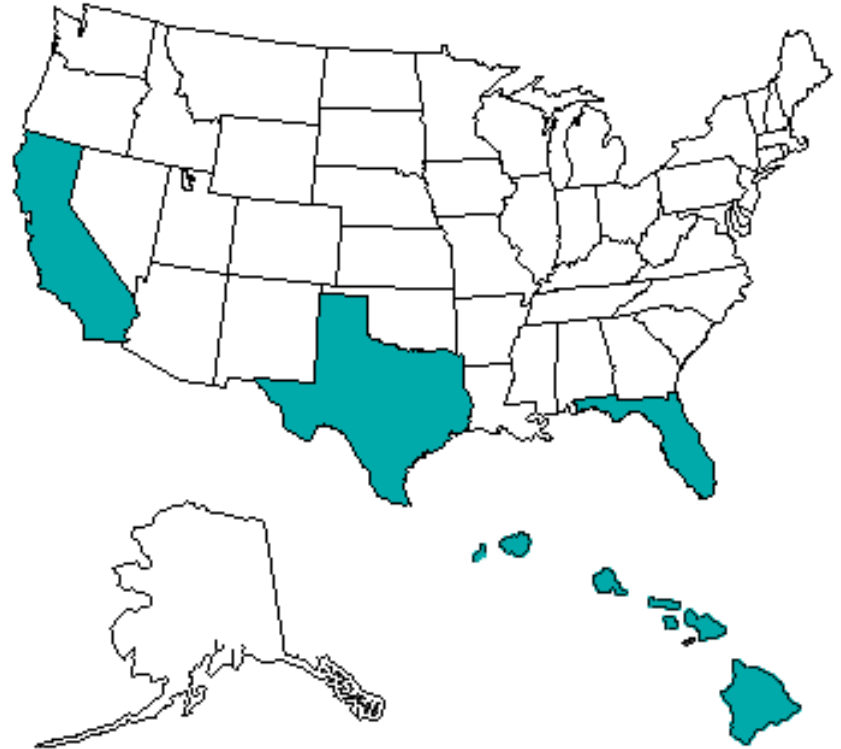


Costa Mesa Raymond and 19th St. – Typical full grown size



A = Brazilian pepper

B = California pepper



Areas in the US where this tree can grow



Can be invasive in tropical environments





Invasive nature of the Brazilian pepper in a tropical environment

Schinus terebinthefolius – Brazilian pepper tree

- Native to Brazil, Naturalized in Hawaii grows to 30' Tall and Wide
- Darker green, non-pendulous, and larger growth than *S. mole* with 5 to 13 oval leaflets
- Shiny scarlet red berries in Winter sometimes sold in peppercorn mixes but can cause gastric distress in large amounts
- Helping this tree reach its best form by early pruning pays off with a great small scale specimen
- Can seed itself and often prone to produce suckers
- Not good near sidewalks or patios

Spathodea campanulata









Yellow form on Bayside Dr. and
Carnation in Corona Del Mar

Hort. Dept. 7/25/13



23rd Street Costa Mesa



Water holding cuplike flowers and winged seeds



Spathodea campanulata – African tulip tree

- Very showy fast growing tree from tropical South Africa reaches 40 to 75' Tall and 20 to 50' wide.
- Glossy deep green leaves to a 18" long divided featherwise into 9 to 19 oblong to ovate leaflets
- Clusters of tulip-shaped 4" flowers in scarlet to blood red appear in the branch ends. **Flowers offer a drink in cup shaped flowers to birds in exchange for help with pollination**
- **Flowers in late Summer but can have some flowering all year long in warmer areas**
- **Beware of planting in frost prone areas**

Gleditsia triacanthos inermis



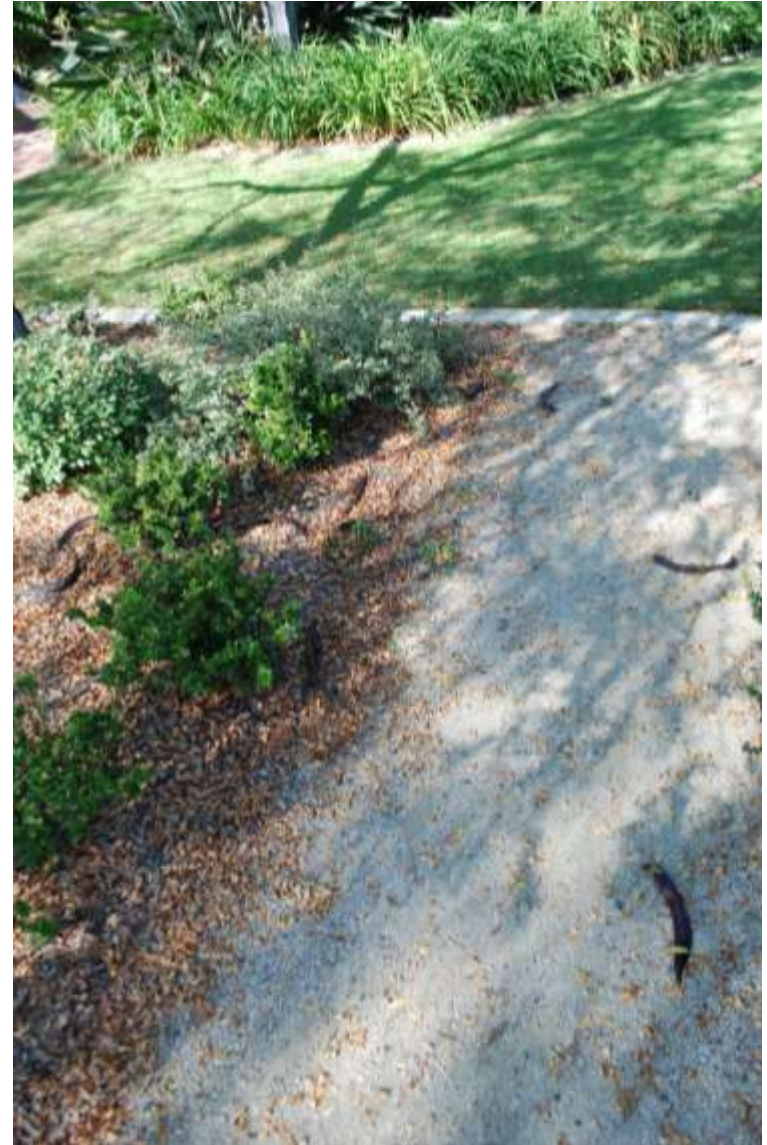




Lenticels
(Gas exchange sites)







Pods can look like flat snakes on the ground



Gleditsia triacanthos inermis – Honey locust

- From Eastern United States this thornless **group** of Locust trees are better suited for Gardens with no thorns and fewer pods
- Grows to 70 feet tall and 25 to 35' wide
- Foliage casts pleasant filtered shade with its 10" long pinnately compound leaves
- **Pods look like flat snakes on the ground**
- Can handle many growing conditions
- **Look for vertical peeling bark and pronounced lenticels on the trunk**

Lagunaria patersonii









Overlooking Corona Del Mar State Beach
Newport Beach, CA





**Washington Square
“Little Italy”**

San Francisco, CA



**Trunk described as “Fluted”
With “Pinkish Hues”**



Fig. 333. *Lagunaria patersoni* Don.





**Persistent
dried seed
capsule
stays on the
tree**

Lagunaria patersonii – Cow itch / Primrose tree

- Evergreen upright form; dense canopy 20' – 40' High, 15-30' spread
- Thick oval leaves olive green above, grey beneath
- Wear gloves and glasses, can irritate skin and eyes.
- Needs good drainage
- Does well near coast; salt air

Ficus benjamina





40 year old *Ficus benjamina*. Horticulture Dept. 2013



Look for wavy margins on leaves that are creased along the center vein.

Very waxy and shiny with pronounced drip tips.







Drip tips





An easy and common Bonsai subject





Santa Monica Street Tree



Our Hort. Department's 40 year old *Ficus benjamina* downed in Santa Ana winds January 2015. Suffered from Crown Rot



A few forms these trees are sold in

Ficus benjamina 'Variegata'

Ficus benjamina – Weeping fig

- From India fast growing to 60' with an even greater spread
- Downward facing pointed shiny leaves with wavy margins lend to the weeping effect
- Great shade or specimen tree for large gardens or parks
- Surface root system can be problematic close to sidewalks or patios
- Used often in containers and indoors in low light situations

Ficus microcarpa









Ficus microcarpa Bark



A known surface root tree







DO NOT
ENTER



Surrounding and Shading the Central Town Square San Ignacio, Baja del Sur, Mexico



Mission San Ignacio, Baja del Sur, Mexico



Evidence of
Cuban loral
thrip damage on
the leaves

Commonly grown in a column form
and used as a tall dense hedge



Ficus microcarpa grown as a Bonsai

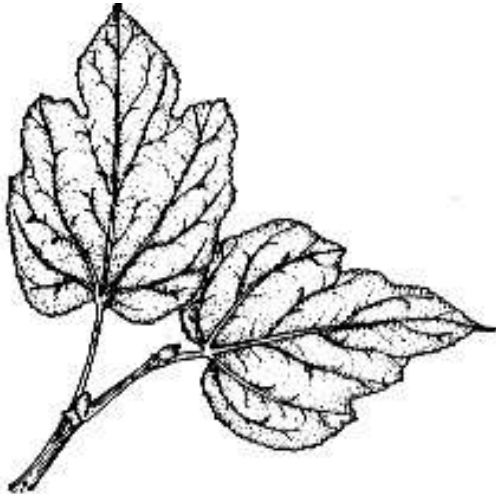


Ficus microcarpa – Indian laurel fig

- Malay peninsula to Borneo grows quickly to 60 feet tall with a dense canopy spreading to 75' (slower to 25 to 35' in so. California)
- Grown often in Nurseries in column form to create tall hedges. Can be sheared
- Prone to Indian laurel Thrips in So. California ('Green Gem' Variety less so)
- As with *F. Benjamina* avoid sidewalks and patios due to surface roots

Morus alba 'Fruitless'





Morus alba 'Fruitless'
FRUITLESS MULBERRY
leaf 5-10 inches long







Front yard Walnut St. Costa Mesa, CA



Reaching over the fence from the Childcare center at OCC



***Morus alba* 'Fruitless'** – Fruitless mulberry

- From China Fast growing tree 30 to 50' Tall and wide (though often smaller).
- Originally for silk industry as food source for silk worms
- Leaves generally lobed and up to 9" long
- Can tolerate heat and sea coast conditions and many soil types. Difficult to grow things underneath the tree due to heavy strong surface roots
- Yellow autumn Fall color

Prunus cerasifera 'Pissardii'















***Prunus cerassifera* ‘Pissardii’ – Purple leaf plum**

- Moderate growing deciduous tree 25 to 35’
- Great ornamental value due to the purple red 3” leaves that get darker with age.
- Bright white flowers with red stamens come in Spring before the tree leaf's out
- Dark bark takes on a twisting characteristic as tree ages
- 50 year life span
- **Has struggled in recent years with vectored disease causing dieback and in some cases death**

Pyrus calleryana 'Bradford'













OCC's Bradford pears

***Pyrus calleryana* 'Bradford'** – Bradford pear

- Chinese deciduous native grows up to 50' Tall and as wide
- Broadly oval scalloped–edged leaves 2-3" across dark glossy green showing some fall color when temps get cold enough
- White bloom clusters cover the tree prior to leafs emerging in the early Spring (Feb.)
- Very small almost nonexistent fruit falls off quickly
- Upward sweeping heavily scaffolded branches benefit from early thinning to avoid possible weak connections
-

Pyrus kawakamii – Evergreen pear





Bark very rough and chunky



Flower



Horizontal growth



Pyrus kawakamii – Evergreen pear

- Taiwan native partially deciduous tree 15 to 30' Tall and wide
- Leaves similar in shape and size to the Bradford pear
- A more horizontal branching habit and much rougher “blocky” bark separate it from the Bradford pear
- Susceptible to Fire blight disease especially in cooler coastal areas

Ulmus parvifolia
sempervirens















Bonsai Garden at the Hunting Library
and Botanical Garden





Ulmus parvifolia Chinese Lacebark Elm

LEAF ARRANGEMENT: alternate

LEAF SHAPE: elliptical

LEAF MARGINS: finely crenate

OTHER ID FEATURES: oblique leaf base,
very narrow twigs with prominent reddish-
brown buds, bladder-like, papery seed pods



Chinese Elm pruned every 2-3 years for more than 20 years
Holly Ln. Newport Beach, CA

Ulmus parvifolia - Chinese/Evergreen elm

- From China, Korea, and Japan this semi deciduous elm grows 40 – 50' Tall and 50 – 70' wide with graceful spreading and somewhat weeping structure.
- Smallest leaves of locally grown elm species at $\frac{3}{4}$ " to $2\frac{1}{2}$ " long
- Papery fruit taken by the breeze often seeds this tree in other yards
- Very distinctive jigsaw puzzle like flaking bark has tiny rusty dots that make the trunk the most distinctive characteristic
- Great shade tree that can be glorious when pruned thoughtfully.

Chilopsis linearis













Chilopsis linearis – Desert willow

- Native to Southwest desert washes below 5,000 ft. it grows to 15-30' tall and 10 to 20' wide
- Narrow willowy leaves are 3-4" long
- Deciduous tree with a long bloom cycle through the Summer and into Fall. Trumpet shaped flowers are a creamy white and purple color
- Great California friendly tree can handle heat and adverse soil conditions